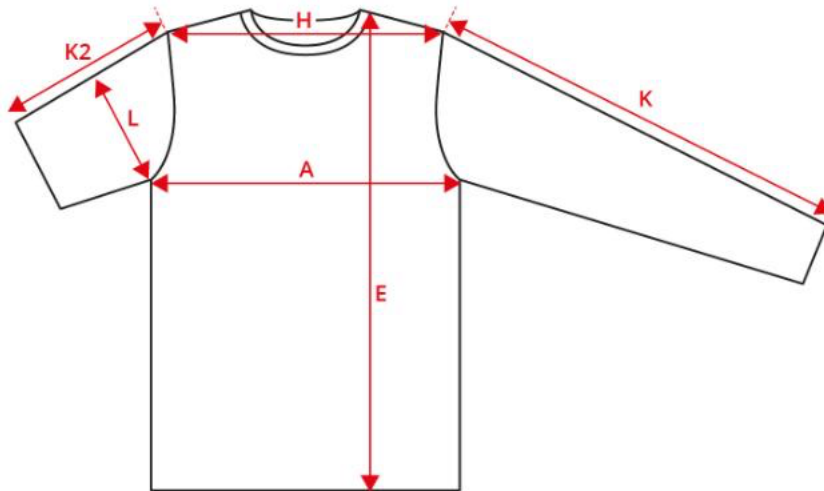


# NO. 0601 Polo sweatshirt | classic



Description (measured in cm)	S	M	L	XL	2XL	3XL	4XL
A: ½ Chest width	59	62	64	67	70	73	75
E: Front length from high point shoulder	71	73	75	77	79	81	83
H: Shoulder to shoulder	54	57	60	63	66	69	71
K: Sleeve length - long	59	60	61	62	63	64	65
L: ½ upper arm width	28	29	30	31	32	33	33

## How to measure



## Tolerance +/- in cm

A	E	H	K	K2	L
1.5	1.5	1.5	1.5	1	1

The measurements in a product measurement chart refer to measurements made directly on the clothing. Lay the garment out flat on an even surface without stretching it. Take the measurements as shown by the arrows and select the size that fits. Use a tape measure for the best results. The tolerances in the measurement chart are based on when the item is received from ID® and not